

Chapter 7

Practice Rhythms Strips



Copyright © 2006 by Mosby Inc. All rights reserved.

Figure 7-10



Ventricular rate/rhythm	
Atrial rate/rhythm	
PR interval	
QRS duration	
Identification	



Copyright © 2006 by Mosby Inc. All rights reserved.

Figure 7-10



Ventricular rate/rhythm	38 bpm / regular
Atrial rate/rhythm	68 bpm / regular
PR interval	Varies
QRS duration	0.06 sec
Identification	Third-degree AV block with ST-segment depression and inverted T waves



Copyright © 2006 by Mosby Inc. All rights reserved.

Figure 7-11

- This rhythm strip is from an 83-year-old woman with syncope.



Ventricular rate/rhythm	
Atrial rate/rhythm	
PR interval	
QRS duration	
Identification	



Copyright © 2006 by Mosby Inc. All rights reserved.

Figure 7-11

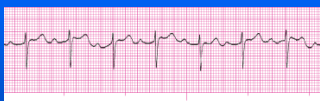


Ventricular rate/rhythm	36 bpm / regular
Atrial rate/rhythm	72 bpm / regular
PR interval	0.20 to 0.22 sec
QRS duration	0.06 to 0.08 sec
Identification	2:1 AV block, probably type I



Copyright © 2006 by Mosby Inc. All rights reserved.

Figure 7-12



Ventricular rate/rhythm	
Atrial rate/rhythm	
PR interval	
QRS duration	
Identification	



Copyright © 2006 by Mosby Inc. All rights reserved.

Figure 7-12



Ventricular rate/rhythm	88 bpm / regular
Atrial rate/rhythm	88 bpm / regular
PR interval	0.28 sec
QRS duration	0.08 sec
Identification	Sinus rhythm with first-degree AV block; ST-segment elevation



Copyright © 2006 by Mosby Inc. All rights reserved.

Figure 7-13



Ventricular rate/rhythm	
Atrial rate/rhythm	
PR interval	
QRS duration	
Identification	



Copyright © 2006 by Mosby Inc. All rights reserved.

Figure 7-13



Ventricular rate/rhythm	<20-94 bpm / irregular
Atrial rate/rhythm	94 bpm / regular
PR interval	lengthening
QRS duration	0.08 sec
Identification	Second-degree AV block type I



Copyright © 2006 by Mosby Inc. All rights reserved.

Figure 7-14



Ventricular rate/rhythm	
Atrial rate/rhythm	
PR interval	
QRS duration	
Identification	



Copyright © 2006 by Mosby Inc. All rights reserved.

Figure 7-14



Ventricular rate/rhythm	68 bpm / regular
Atrial rate/rhythm	68 bpm / regular
PR interval	0.28 sec
QRS duration	0.06 sec
Identification	Sinus rhythm with first-degree AV block, ST-segment depression



Copyright © 2006 by Mosby Inc. All rights reserved.

Figure 7-15



Ventricular rate/rhythm	
Atrial rate/rhythm	
PR interval	
QRS duration	
Identification	



Copyright © 2006 by Mosby Inc. All rights reserved.

Figure 7-15



Ventricular rate/rhythm	48 to 83 bpm / irregular
Atrial rate/rhythm	167 bpm / regular
PR interval	0.24 sec
QRS duration	0.12 sec
Identification	Second-degree AV block type II; ST-segment depression



Copyright © 2006 by Mosby Inc. All rights reserved.

Figure 7-16



Ventricular rate/rhythm	
Atrial rate/rhythm	
PR interval	
QRS duration	
Identification	



Copyright © 2006 by Mosby Inc. All rights reserved.

Figure 7-16



Ventricular rate/rhythm	34 bpm / regular
Atrial rate/rhythm	68 bpm / regular
PR interval	0.14 to 0.16 sec
QRS duration	0.10 sec
Identification	2:1 AV block probably type I; ST-segment depression; tall T waves



Copyright © 2006 by Mosby Inc. All rights reserved.

Figure 7-17



Ventricular rate/rhythm	
Atrial rate/rhythm	
PR interval	
QRS duration	
Identification	



Copyright © 2006 by Mosby Inc. All rights reserved.

Figure 7-17



Ventricular rate/rhythm	60 to 98 bpm / irregular
Atrial rate/rhythm	111 bpm / regular
PR interval	Lengthens
QRS duration	0.08 sec
Identification	Second-degree AV block type I; ST-segment depression



Copyright © 2006 by Mosby Inc. All rights reserved.

Figure 7-18

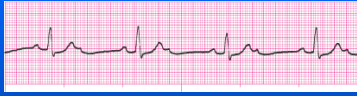


Ventricular rate/rhythm	
Atrial rate/rhythm	
PR interval	
QRS duration	
Identification	



Copyright © 2006 by Mosby Inc. All rights reserved.

Figure 7-18



Ventricular rate/rhythm	40 bpm / regular
Atrial rate/rhythm	83 bpm / regular
PR interval	0.24 sec
QRS duration	0.10 sec
Identification	2:1 AV block, probably type I; ST-segment depression



Copyright © 2006 by Mosby Inc. All rights reserved.

Figure 7-19



Ventricular rate/rhythm	
Atrial rate/rhythm	
PR interval	
QRS duration	
Identification	



Copyright © 2006 by Mosby Inc. All rights reserved.

Figure 7-19



Ventricular rate/rhythm	50 bpm / regular
Atrial rate/rhythm	167 bpm / regular
PR interval	Varies
QRS duration	0.06 sec
Identification	Third-degree AV block; ST-segment elevation



Copyright © 2006 by Mosby Inc. All rights reserved.

Figure 7-20

- This rhythm strip is from a 77-year-old woman who stated she felt fine. She stopped at a blood pressure machine in Wal-Mart and the machine would not read her pulse rate. She later went to her physician's office and then to the emergency department.



Ventricular rate/rhythm	
Atrial rate/rhythm	
PR interval	
QRS duration	
Identification	



Copyright © 2006 by Mosby Inc. All rights reserved.

Figure 7-20



Ventricular rate/rhythm	30 bpm / regular
Atrial rate/rhythm	68 bpm / regular
PR interval	0.28 sec
QRS duration	0.16 sec
Identification	2:1 AV block, probably type II; ST-segment elevation



Copyright © 2006 by Mosby Inc. All rights reserved.

Figure 7-21



Ventricular rate/rhythm	
Atrial rate/rhythm	
PR interval	
QRS duration	
Identification	



Copyright © 2006 by Mosby Inc. All rights reserved.

Figure 7-21



Ventricular rate/rhythm	45 bpm / regular
Atrial rate/rhythm	115 bpm / regular
PR interval	Varies
QRS duration	0.16 sec
Identification	Third-degree AV block



Copyright © 2006 by Mosby Inc. All rights reserved.

Figure 7-22



Ventricular rate/rhythm	
Atrial rate/rhythm	
PR interval	
QRS duration	
Identification	



Copyright © 2006 by Mosby Inc. All rights reserved.

Figure 7-22

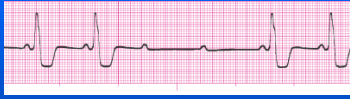


Ventricular rate/rhythm	50-94 bpm / irregular
Atrial rate/rhythm	94 bpm / regular
PR interval	Lengthens
QRS duration	0.10 sec
Identification	Second-degree AV block type I; ST-segment elevation



Copyright © 2006 by Mosby Inc. All rights reserved.

Figure 7-23

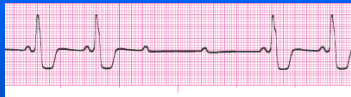


Ventricular rate/rhythm	
Atrial rate/rhythm	
PR interval	
QRS duration	
Identification	



Copyright © 2006 by Mosby Inc. All rights reserved.

Figure 7-23

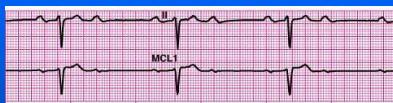


Ventricular rate/rhythm	<20-60 bpm / irregular
Atrial rate/rhythm	60 bpm / regular
PR interval	0.16 sec
QRS duration	0.12 sec
Identification	Second-degree AV block type II; ST-segment depression



Copyright © 2006 by Mosby Inc. All rights reserved.

Figure 7-24



Ventricular rate/rhythm	
Atrial rate/rhythm	
PR interval	
QRS duration	
Identification	



Copyright © 2006 by Mosby Inc. All rights reserved.

Figure 7-24



Ventricular rate/rhythm	36 bpm / regular
Atrial rate/rhythm	72 bpm / regular
PR interval	0.32 sec
QRS duration	0.10 sec
Identification	2:1 AV block, probably type 1



Copyright © 2006 by Mosby Inc. All rights reserved.

Figure 7-25



Ventricular rate/rhythm	
Atrial rate/rhythm	
PR interval	
QRS duration	
Identification	



Copyright © 2006 by Mosby Inc. All rights reserved.

Figure 7-25




Ventricular rate/rhythm	107 bpm / regular
Atrial rate/rhythm	107 bpm / regular
PR interval	0.24 sec
QRS duration	0.08 sec
Identification	Sinus tachycardia with first-degree AV block



Copyright © 2006 by Mosby Inc. All rights reserved.

Questions?



Copyright © 2006 by Mosby Inc. All rights reserved.
